

# Common Ostrich *Struthio camelus*

441 georeferenced plots

from 2,546 records

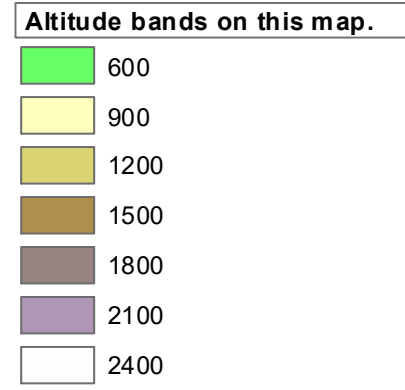
- Virgin Yellow-vented Bulbul squares **7**
- Single YvB month **15**
- Two YvB months **20**

### Seasonality

presence bs eggs

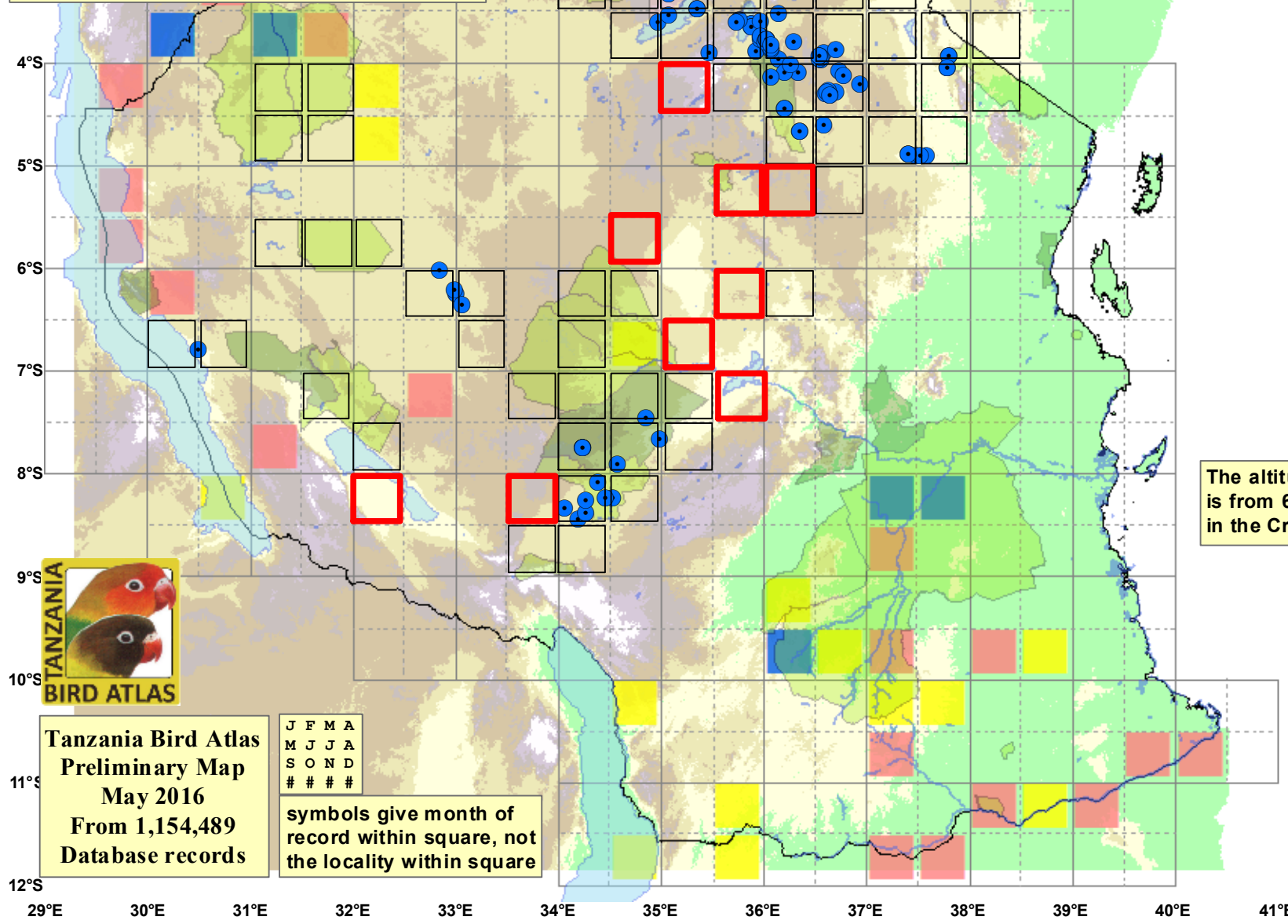
Month	presence	bs	eggs
January	301	5	1
February	254	2	1
March	182	2	1
April	157	-	2
May	183	-	-
June	235	9	-
July	204	14	4
August	199	18	10
September	140	12	9
October	174	19	11
November	142	15	6
December	222	7	4
month 13	1		

The altitude range for Ostrich in Tanzania is from 610m in the Natron Basin to 2,092m in the Crater Highlands.



The open squares indicate the range for all records. The 9 RED squares are pre 1985 records and indicate possible extirpation and a reduction in range. There are 2 pre 1985 records for 3606A (Kongwa) and only a single post 1985 record in July 1995. Otherwise there is now a clear range gap between populations north of the Kibaya Ridge and those in the Rungwa / Ruaha ecosystem some 200km to the south.

recorded from 81 squares 23 %



Tanzania Bird Atlas  
Preliminary Map  
May 2016  
From 1,154,489  
Database records

J F M A  
M J J A  
S O N D  
# # # #

symbols give month of record within square, not the locality within square