

# African Reed Warbler

*Acrocephalus baeticatus*

241 plots from 349 records

Virgin Yellow-vented Bulbul squares **9**

Single YvB month **16**

Two YvB months **24**

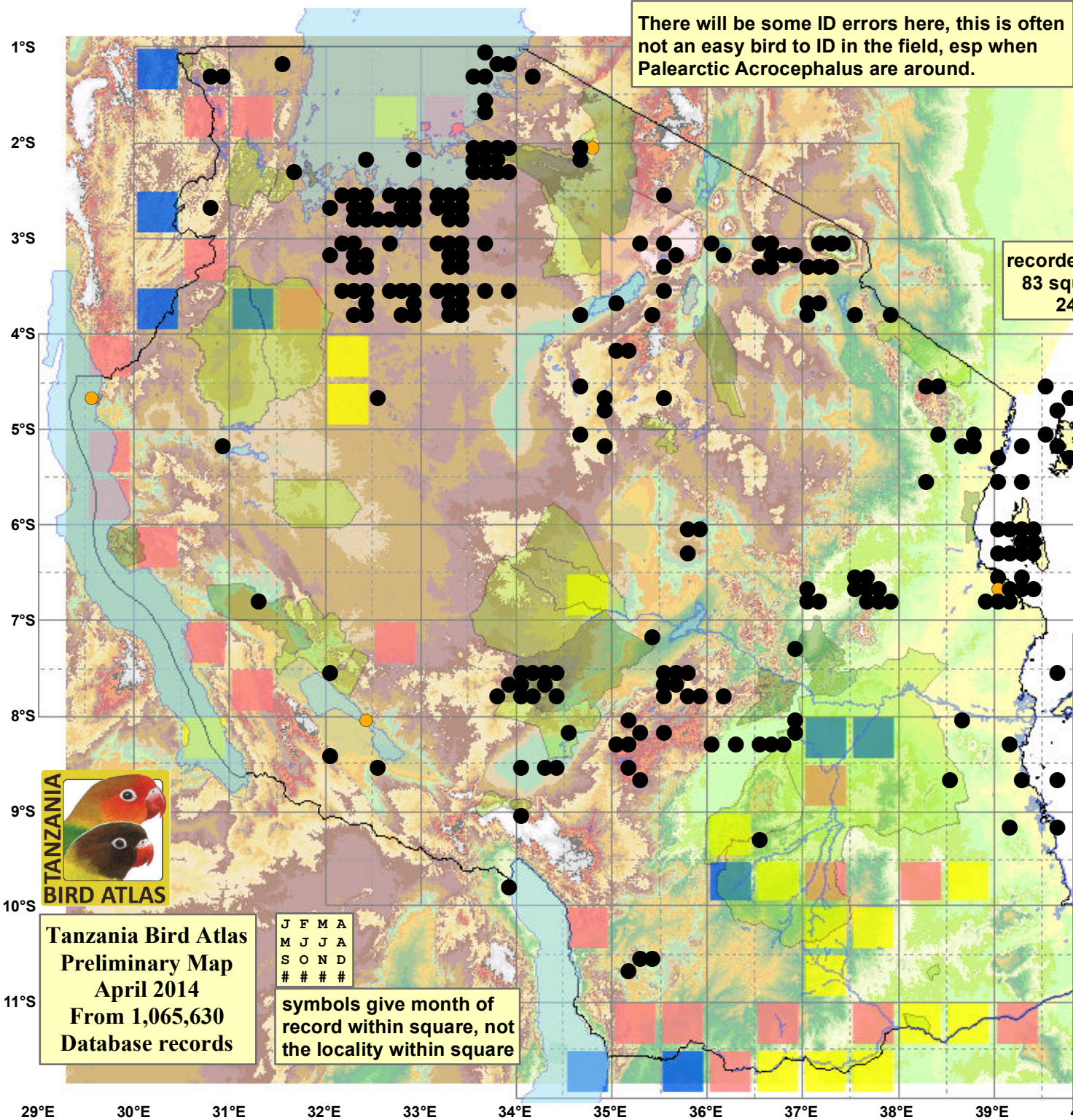
Seasonality  
presence bs eggs

January	30	-	-
February	43	-	-
March	30	1	-
April	22	1	-
May	20	2	-
June	22	-	-
July	26	-	-
August	22	-	-
September	33	-	-
October	28	-	-
November	36	-	-
December	31	-	1
month 13	1		

There will be some ID errors here, this is often not an easy bird to ID in the field, esp when Palearctic *Acrocephalus* are around.

recorded from  
83 squares  
24%

from Britton (1980). We follow Chapin (1953) in regarding the birds of coastal Tanzania as *suaelicus* rather than nominate. Wide-ranging but seldom common, frequenting rank grass, moist thickets, swamp edges, millet gardens and low shrubbery up to 1900 m. The race *suaelicus* is known from Mikindani, Dar es Salaam, Mkomazi, Zanzibar Pemba and Mafia, while *cinnamomeus* ranges from S Tanzania at Mbamba Bay and Lake Rukwa north to the Lake Victoria basin, the C Kenya highlands, Ferguson's Gulf on Lake Turkana, and W Uganda north to Toro and Bunyoro. Birds from N Iringa, Wembere, the Arusha/Namanga/Amboseli area and Ngomeni cannot be assigned racially. This species occurs throughout the year at a number of sites and may be mainly resident, though two birds judged to be *cinnamomeus* trapped at Ngulia in Tsavo West NP in December 1973 provide evidence of migratory movements.



Tanzania  
BIRD ATLAS  
Tanzania Bird Atlas  
Preliminary Map  
April 2014  
From 1,065,630  
Database records

J F M A  
M J J A  
S O N D  
# # # #

symbols give month of  
record within square, not  
the locality within square