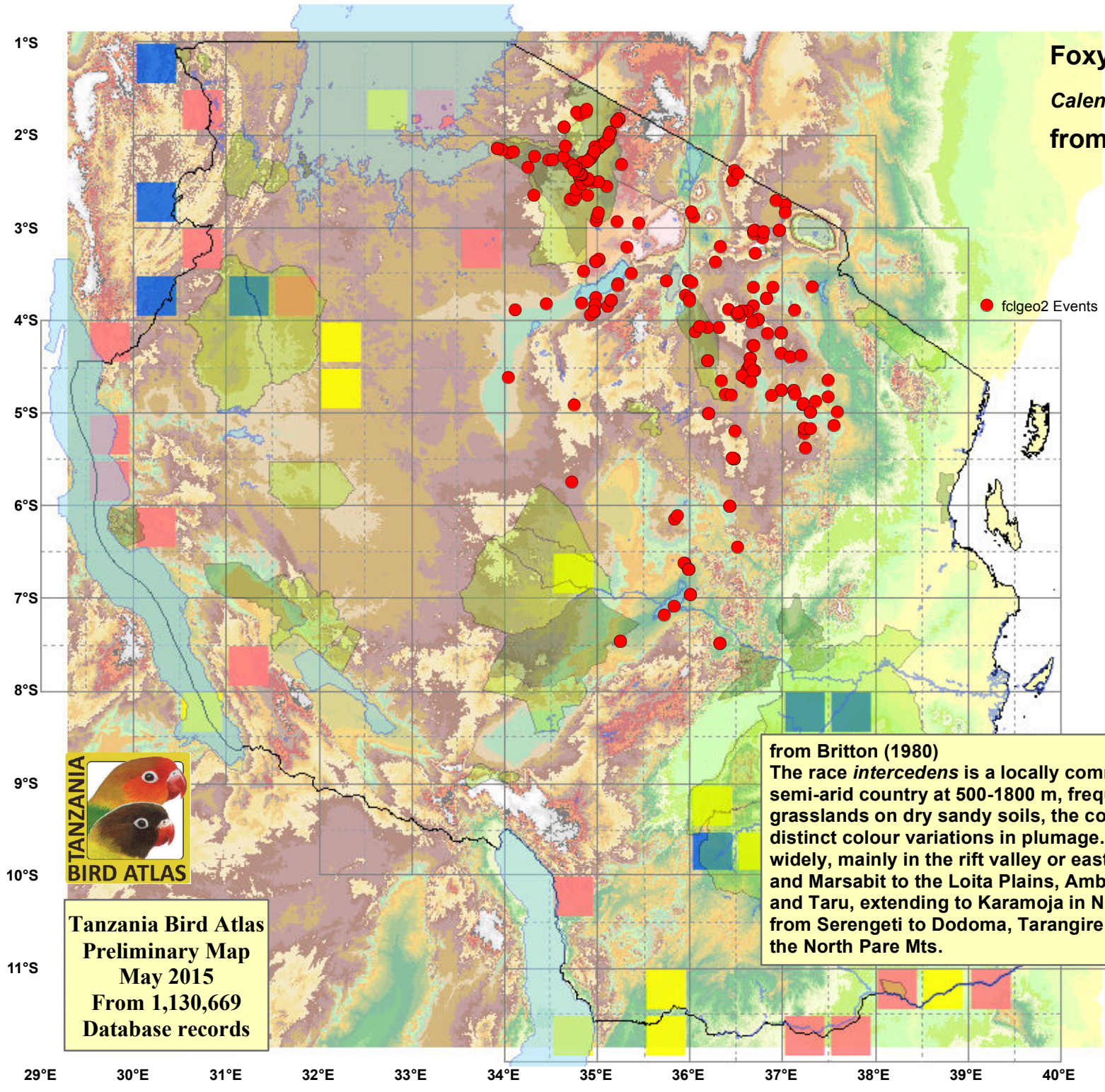


Foxy Lark
Calendulauda alopex
 from 246 geo-referenced records



Virgin Yellow-vented Bulbul squares **7**
 Single YvB month **14**
 Two YvB months **20**

● fclgeo2 Events

	Seasonality presence	bs	eggs
January	107	2	-
February	100	2	-
March	107	8	-
April	91	4	2
May	67	4	-
June	72	2	-
July	95	-	-
August	85	1	-
September	59	-	-
October	80	1	-
November	81	4	-
December	122	3	-



Tanzania Bird Atlas
 Preliminary Map
 May 2015
 From 1,130,669
 Database records

from Britton (1980)
 The race *intercedens* is a locally common resident of arid or semi-arid country at 500-1800 m, frequenting open and bushed grasslands on dry sandy soils, the colour of which results in distinct colour variations in plumage. In interior Kenya it ranges widely, mainly in the rift valley or eastwards, from Lodwar, Pokot and Marsabit to the Loita Plains, Amboseli, the Tsavo region and Taru, extending to Karamoja in NE Uganda and to N Tz from Serengeti to Dodoma, Tarangire NP and the foothills of the North Pare Mts.

29°E 30°E 31°E 32°E 33°E 34°E 35°E 36°E 37°E 38°E 39°E 40°E 41°E