

Corncrake

Crex crex

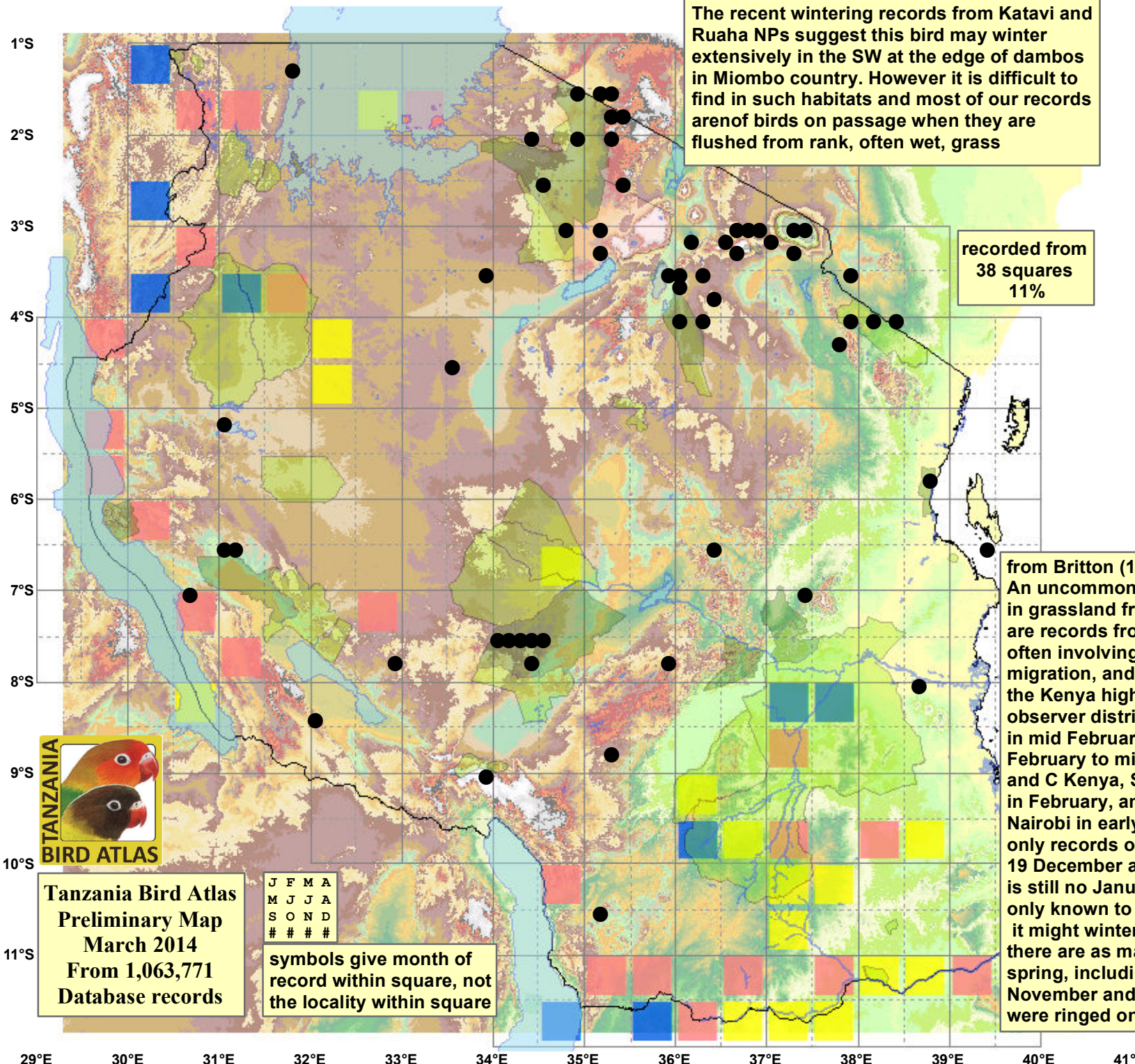
60 plots from 89 records

The recent wintering records from Katavi and Ruaha NPs suggest this bird may winter extensively in the SW at the edge of dambos in Miombo country. However it is difficult to find in such habitats and most of our records are of birds on passage when they are flushed from rank, often wet, grass

recorded from
38 squares
11%

	Seasonality		
	presence	bs	eggs
January	13	-	-
February	12	-	-
March	11	-	-
April	26	-	-
May	7	-	-
June	1	-	-
July	-	-	-
August	-	-	-
September	-	-	-
October	2	-	-
November	9	-	-
December	7	-	-
month 13	1	-	-

from Britton (1980). An uncommon Palaearctic passage migrant in grassland from sea-level to 3000 m. There are records from most parts of East Africa, often involving birds which have perished on migration, and the relatively large number from the Kenya highlands might simply reflect observer distribution. Numbers in Ugalla GR in mid February, up to four at Rukwa from 1 February to mid April, scattered records in E and C Kenya, S Uganda and NW Tanzania in February, and single specimens from Nairobi in early May and early June, are the only records outside the periods 7 October-19 December and 14 March-29 April. There is still no January record. In Tanzania it is only known to occur in February-April, though it might winter in the southwest. In Kenya there are as many records for autumn as spring, including 9 at Ngulia between 15 November and 18 December, of which four were ringed on a single night.



Tanzania Bird Atlas
Preliminary Map
March 2014
From 1,063,771
Database records

J F M A
M J J A
S O N D

symbols give month of
record within square, not
the locality within square