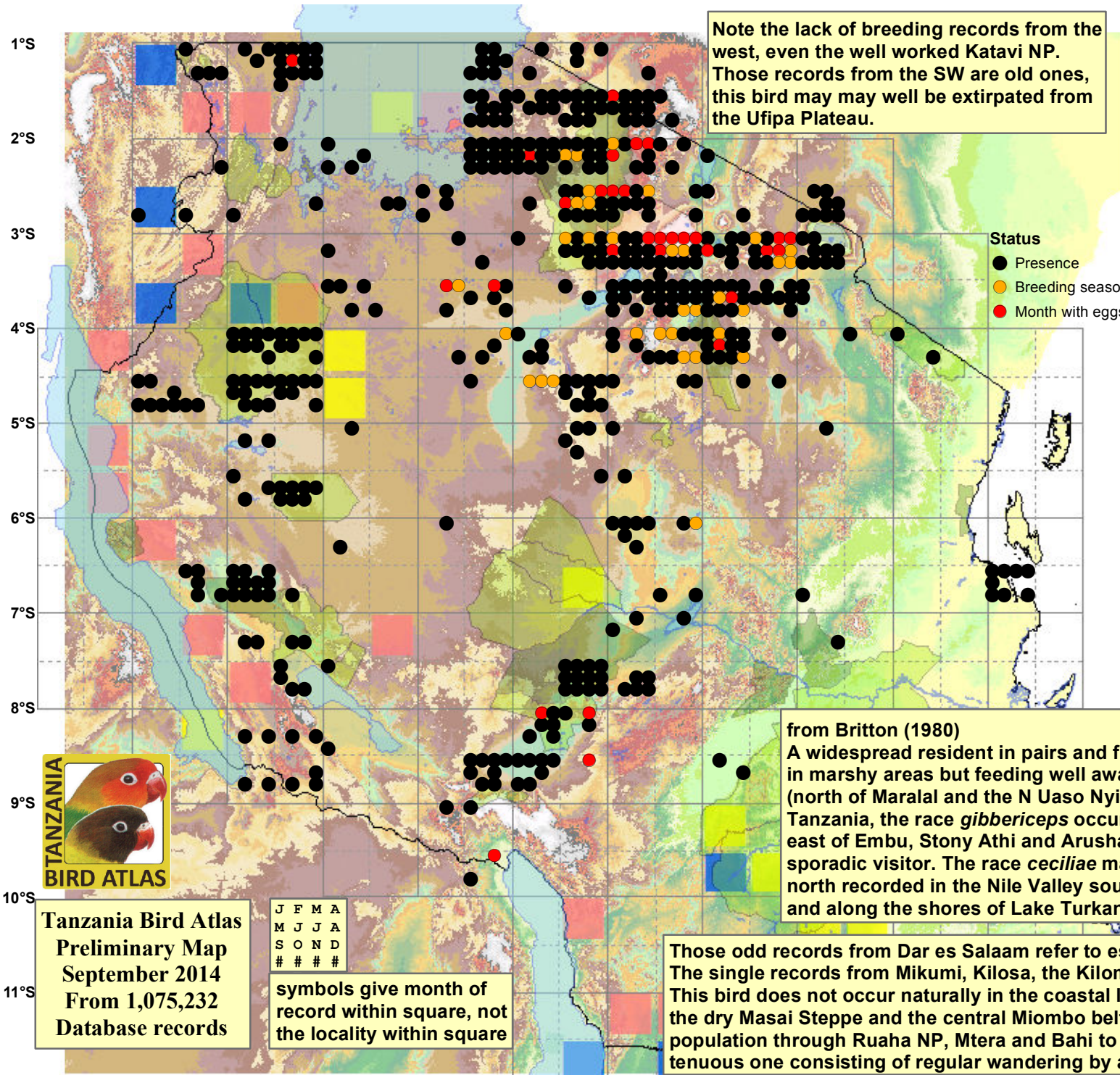


# Grey Crowned Crane

*Balearica regulorum*

519 plots from 1,782 records



Note the lack of breeding records from the west, even the well worked Katavi NP. Those records from the SW are old ones, this bird may may well be extirpated from the Ufipa Plateau.

**Status**  
 ● Presence  
 ● Breeding season  
 ● Month with eggs

Virgin Yellow-vented Bulbul squares **9**  
 Single YvB month **16**  
 Two YvB months **24**

	Seasonality		
	presence	bs	eggs
January	277	6	3
February	186	7	5
March	165	5	12
April	130	11	8
May	97	2	5
June	113	5	5
July	120	4	2
August	137	1	-
September	89	-	-
October	108	-	-
November	107	3	-
December	159	6	-
month 13	4		

from Britton (1980)  
 A widespread resident in pairs and flocks in grassland up to 3000 m, breeding in marshy areas but feeding well away from water. Apart from N and E Kenya (north of Maralal and the N Uaso Nyiro River), the coastal lowlands and SE Tanzania, the race *gibbericeps* occurs throughout. It is not known to breed east of Embu, Stony Athi and Arusha NP, and in Tsavo East NP it is only a sporadic visitor. The race *ceciliae* may be only a seasonal visitor from the north recorded in the Nile Valley south to Pakwach and Kabalega Falls NP and along the shores of Lake Turkana south to Lowarangak and Ileret.

Those odd records from Dar es Salaam refer to escapees / releases from the bird trade. The single records from Mikumi, Kilosa, the Kilombero and Mkomazi refer to wanderers. This bird does not occur naturally in the coastal lowlands. Note also its absence from the dry Masai Steppe and the central Miombo belt. That link between the Usangu population through Ruaha NP, Mtera and Bahi to the Singida lakes and Kitangire is a tenuous one consisting of regular wandering by a few birds.



**Tanzania Bird Atlas**  
 Preliminary Map  
 September 2014  
 From 1,075,232  
 Database records

J F M A  
 M J J A  
 S O N D  
 # # # #  
 symbols give month of record within square, not the locality within square

29°E 30°E 31°E 32°E 33°E 34°E 35°E 36°E 37°E 38°E 39°E 40°E 41°E