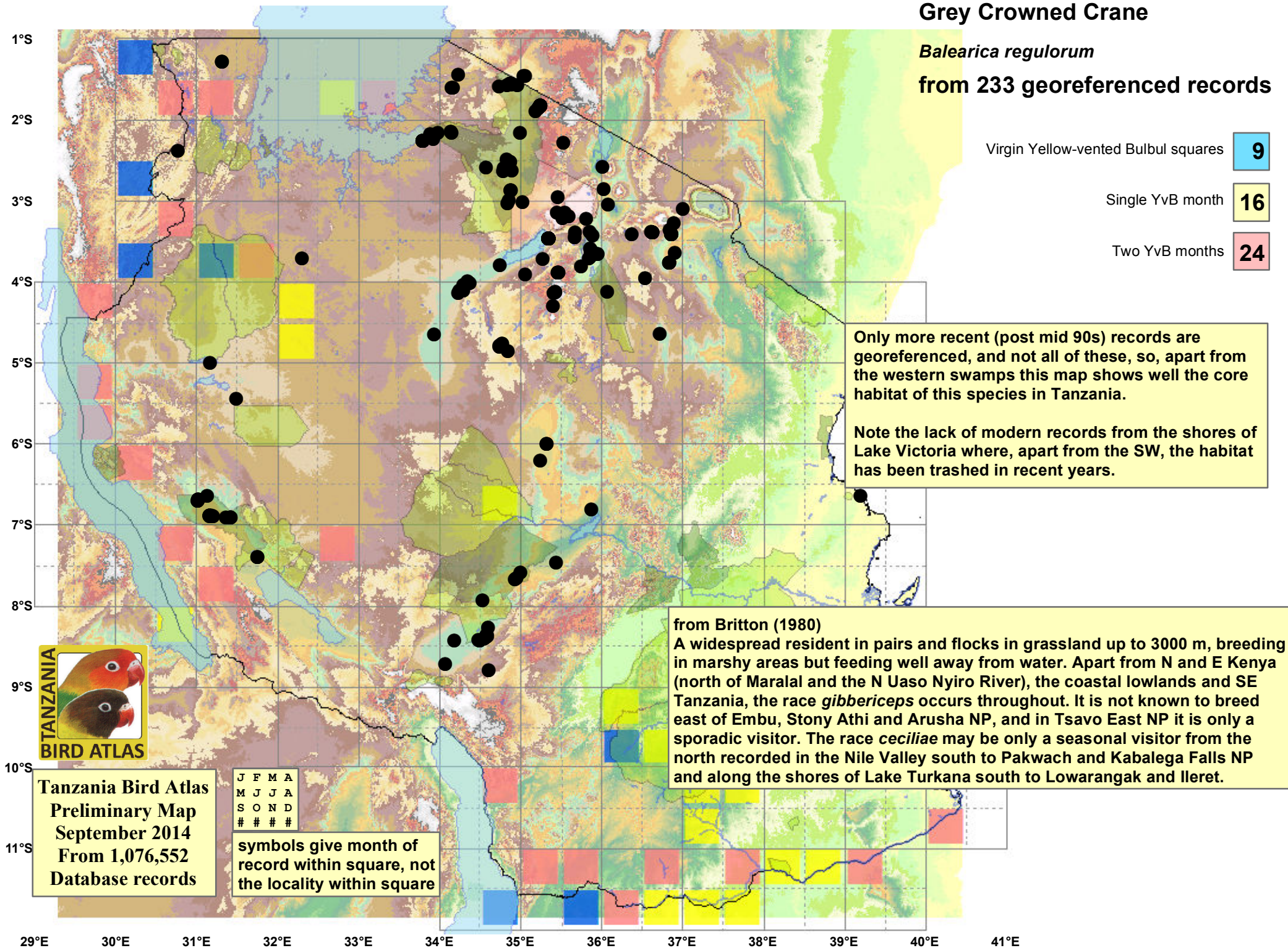


Grey Crowned Crane

Balearica regulorum

from 233 georeferenced records



Virgin Yellow-vented Bulbul squares **9**

Single YvB month **16**

Two YvB months **24**

Only more recent (post mid 90s) records are georeferenced, and not all of these, so, apart from the western swamps this map shows well the core habitat of this species in Tanzania.

Note the lack of modern records from the shores of Lake Victoria where, apart from the SW, the habitat has been trashed in recent years.

from Britton (1980)
 A widespread resident in pairs and flocks in grassland up to 3000 m, breeding in marshy areas but feeding well away from water. Apart from N and E Kenya (north of Maralal and the N Uaso Nyiro River), the coastal lowlands and SE Tanzania, the race *gibbericeps* occurs throughout. It is not known to breed east of Embu, Stony Athi and Arusha NP, and in Tsavo East NP it is only a sporadic visitor. The race *ceciliae* may be only a seasonal visitor from the north recorded in the Nile Valley south to Pakwach and Kabalega Falls NP and along the shores of Lake Turkana south to Lowarangak and Ileret.



Tanzania Bird Atlas
 Preliminary Map
 September 2014
 From 1,076,552
 Database records

J	F	M	A
M	J	J	A
S	O	N	D
#	#	#	#

symbols give month of record within square, not the locality within square