

Grey Crowned Crane

Balearica regulorum

521 plots from 1,745 records

Virgin Yellow-vented Bulbul squares **9**

Single YvB month **16**

Two YvB months **24**

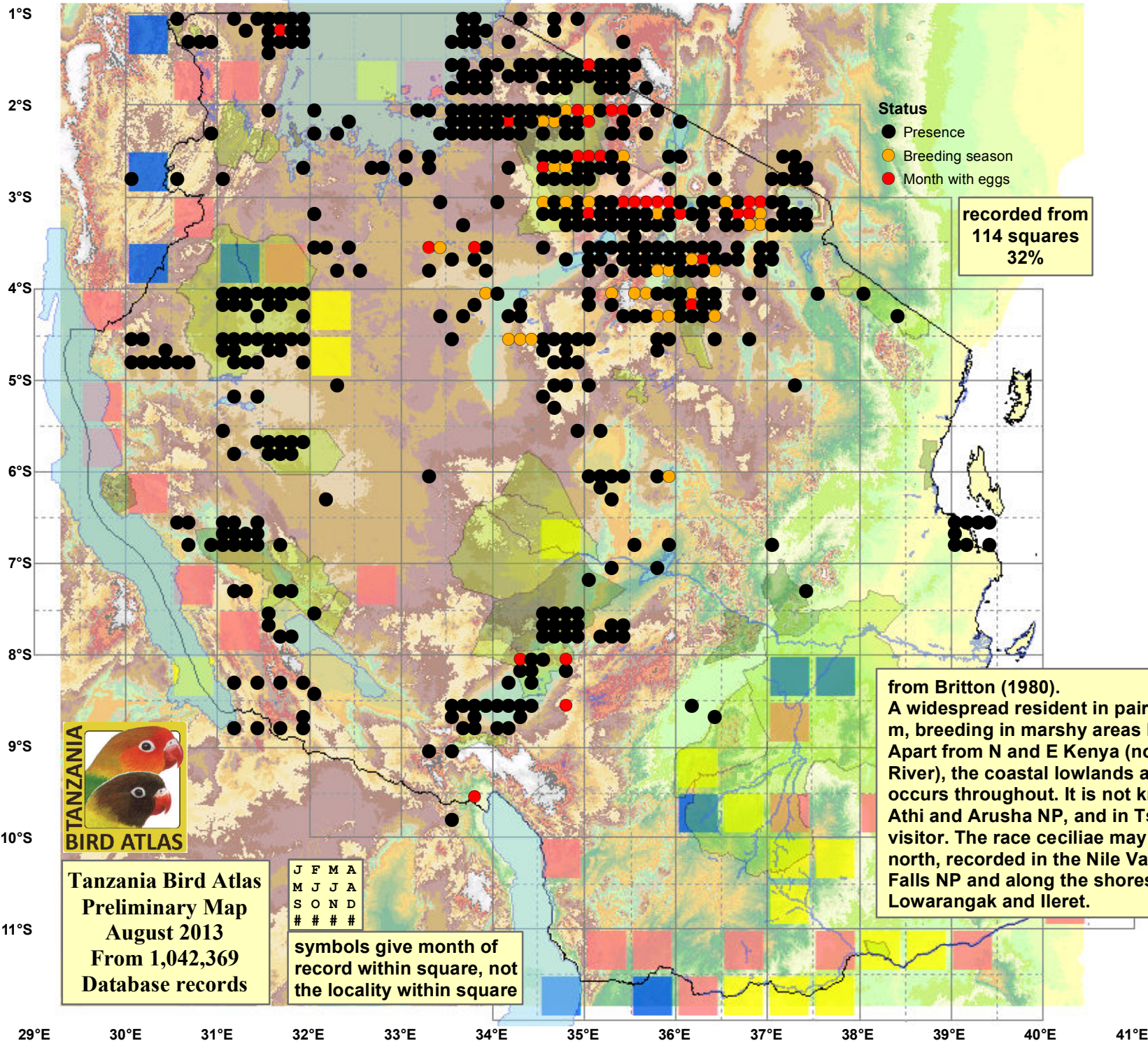
Seasonality
presence bs eggs

Month	presence	bs	eggs
January	276	6	3
February	183	7	5
March	164	5	12
April	126	11	8
May	94	1	4
June	109	4	5
July	113	3	2
August	133	1	-
September	86	-	-
October	107	-	-
November	103	3	-
December	161	6	-
month 13	4		

Status
 ● Presence
 ● Breeding season
 ● Month with eggs

recorded from
114 squares
32%

from Britton (1980).
 A widespread resident in pairs and flocks in grassland up to 3000 m, breeding in marshy areas but feeding well away from water. Apart from N and E Kenya (north of Maralal and the N Uaso Nyiro River), the coastal lowlands and SE Tanzania, the race *gibbericeps* occurs throughout. It is not known to breed east of Embu, Stony Athi and Arusha NP, and in Tsavo East NP it is only a sporadic visitor. The race *ceciliae* may be only a seasonal visitor from the north, recorded in the Nile Valley south to Pakwach and Kabalega Falls NP and along the shores of Lake Turkana south to Lowarangak and Ileret.



Tanzania Bird Atlas
 Preliminary Map
 August 2013
 From 1,042,369
 Database records

J F M A
 M J J A
 S O N D
 # # # #

symbols give month of
 record within square, not
 the locality within square