

# Speckle-throated Woodpecker

*Campethera scriptoricauda*

95 plots from 141 records

Virgin Yellow-vented Bulbul squares **9**  
 Single YvB month **16**  
 Two YvB months **24**

Status  
 ● Presence  
 ● Breeding season  
 ● Month with eggs

Occurs in 40 squares 11%

Seasonality	presence bs eggs		
	presence	bs	eggs
January	12	-	-
February	11	2	-
March	11	-	-
April	6	-	-
May	6	1	-
June	11	-	-
July	13	-	-
August	11	-	-
September	14	-	-
October	6	-	-
November	20	-	-
December	16	1	-

from Britton (1980). Bennett's Woodpecker *C. bennettii*

A rather local and generally uncommon bird of miombo and other woodlands up to 1600 m, forming a superspecies with the virtually allopatric *C. nubica*, but often occurring on the same ground as *C. abingoni* despite their similarity in size. The nominate race occurs in W Tanzania from Kibondo to E Tabora and Ufipa,

while *scriptoricauda* occurs in interior E Tanzania from Songea, the Selous GR, Ruaha NP, Mikumi NP and Soga to Handeni, Mt Kilimanjaro and the North Pare Mts.

The ref to Ruaha NP is surely an error. If anyone knows the origin of this please let us know.

There may well have been suitable woodland habitat along the the foothills of the West Usambara and Pare mts and even on Mt Kilimanjaro 50 to 60 years ago but this has long gone, with just a fraction remaining as remnant gallery forest.

There are clear ecological differences between this species and Nubian Woodpecker on the dry central plateau and a distinctive geophysical barrier between this bird and the population of Bennett's Woodpecker in the western Miombo.

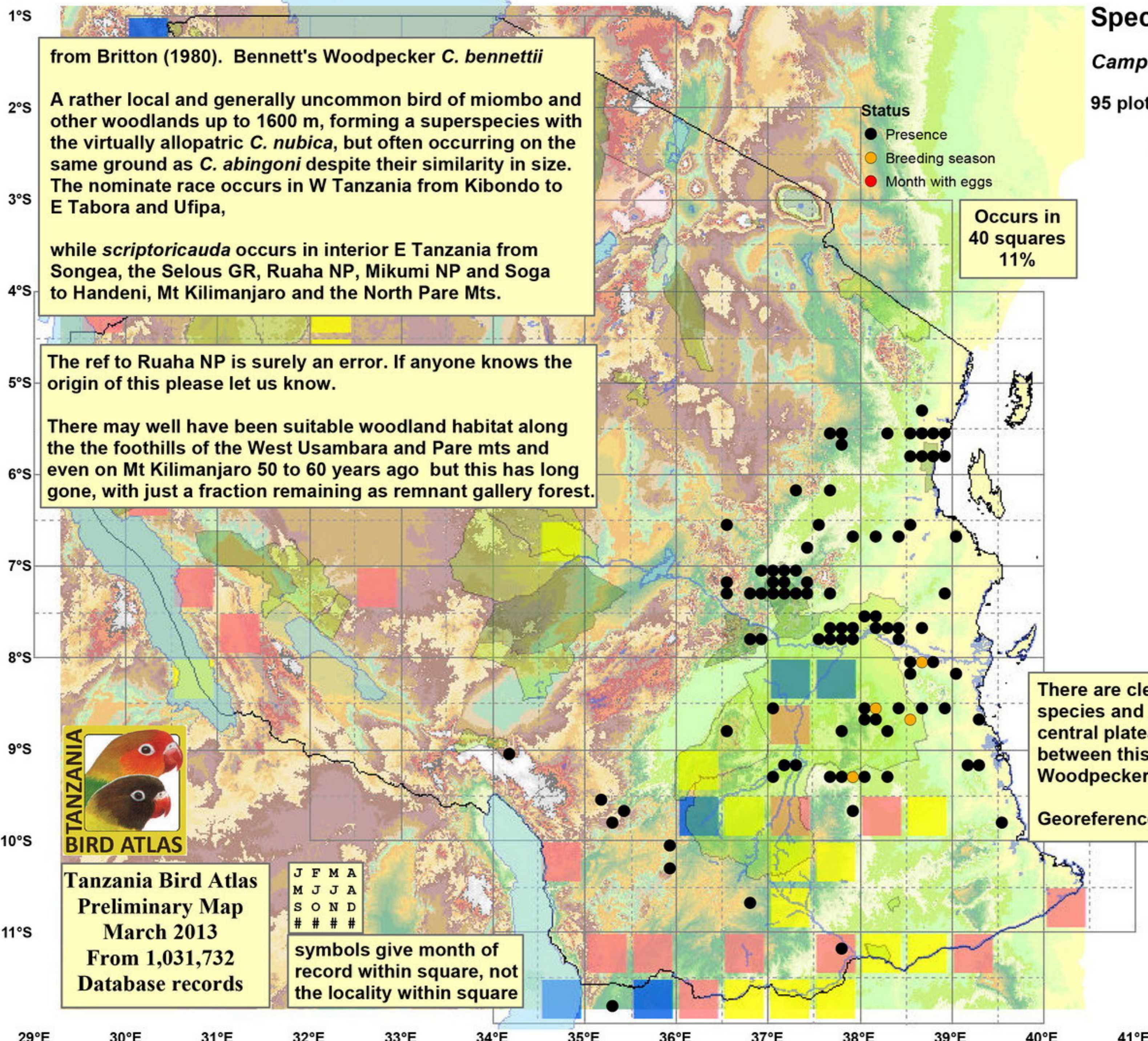
Georeferences maps for all three species to follow.



Tanzania Bird Atlas  
 Preliminary Map  
 March 2013  
 From 1,031,732  
 Database records

J	F	M	A
M	J	J	A
S	O	N	D
#	#	#	#

symbols give month of record within square, not the locality within square



1°S  
2°S  
3°S  
4°S  
5°S  
6°S  
7°S  
8°S  
9°S  
10°S  
11°S

29°E 30°E 31°E 32°E 33°E 34°E 35°E 36°E 37°E 38°E 39°E 40°E 41°E