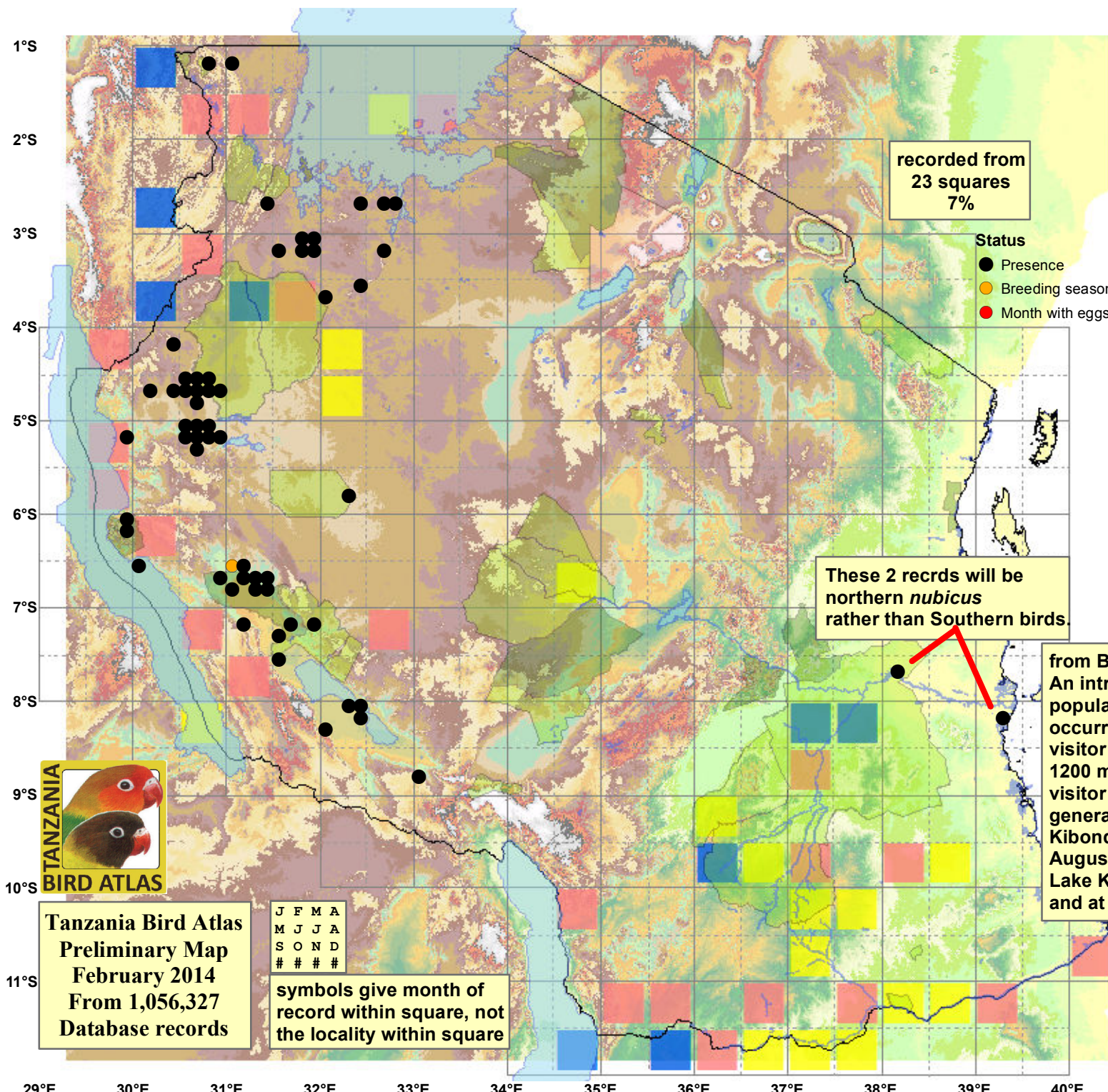


Southern Carmine Bee-eater

Merops nubicoides

59 plots from 109 records



recorded from
23 squares
7%

Status
● Presence
● Breeding season
● Month with eggs

Virgin Yellow-vented Bulbul squares **9**
Single YvB month **16**
Two YvB months **24**

Seasonality	presence bs eggs		
	presence	bs	eggs
January	11	-	-
February	6	-	-
March	6	-	-
April	5	-	-
May	9	-	-
June	15	-	-
July	14	-	-
August	23	-	-
September	5	-	-
October	8	-	-
November	2	-	-
December	4	-	-

These 2 recrds will be northern *nubicus* rather than Southern birds.

from Britton (1980).
An intra-African migrant with disjunct breeding populations in the northern and southern tropics, occurring in East Africa mainly as a non-breeding visitor to bushed grassland and cultivation below 1200 m. The race *nubicoides* is a non-breeding visitor from the south which is regular and generally common in W Tanzania north to Kibondo and Ngara between late March and August, and there are records of single birds at Lake Kanyaboli and Kedong in S Kenya in July and at Nyarumbugu in NW Tanzania in May.



Tanzania Bird Atlas
Preliminary Map
February 2014
From 1,056,327
Database records

J F M A
M J J A
S O N D

symbols give month of record within square, not the locality within square

29°E 30°E 31°E 32°E 33°E 34°E 35°E 36°E 37°E 38°E 39°E 40°E 41°E

1°S
2°S
3°S
4°S
5°S
6°S
7°S
8°S
9°S
10°S
11°S