

# White-faced Owl

*Ptilopsis granti*

202 plots from 291 records

- Virgin Yellow-vented Bulbul squares 13
- Single YvB month 25
- Two YvB months 28

Britton (1980) treated this bird as White-faced Scops Owl *Otus leucotis* represented in Tanzania by the race *O. l. granti*. Only 5 localities are actually mentioned in Britton. It is more common than this map suggests, just difficult to locate unless one is awake after midnight and tuned into the distinctive call.

### Seasonality

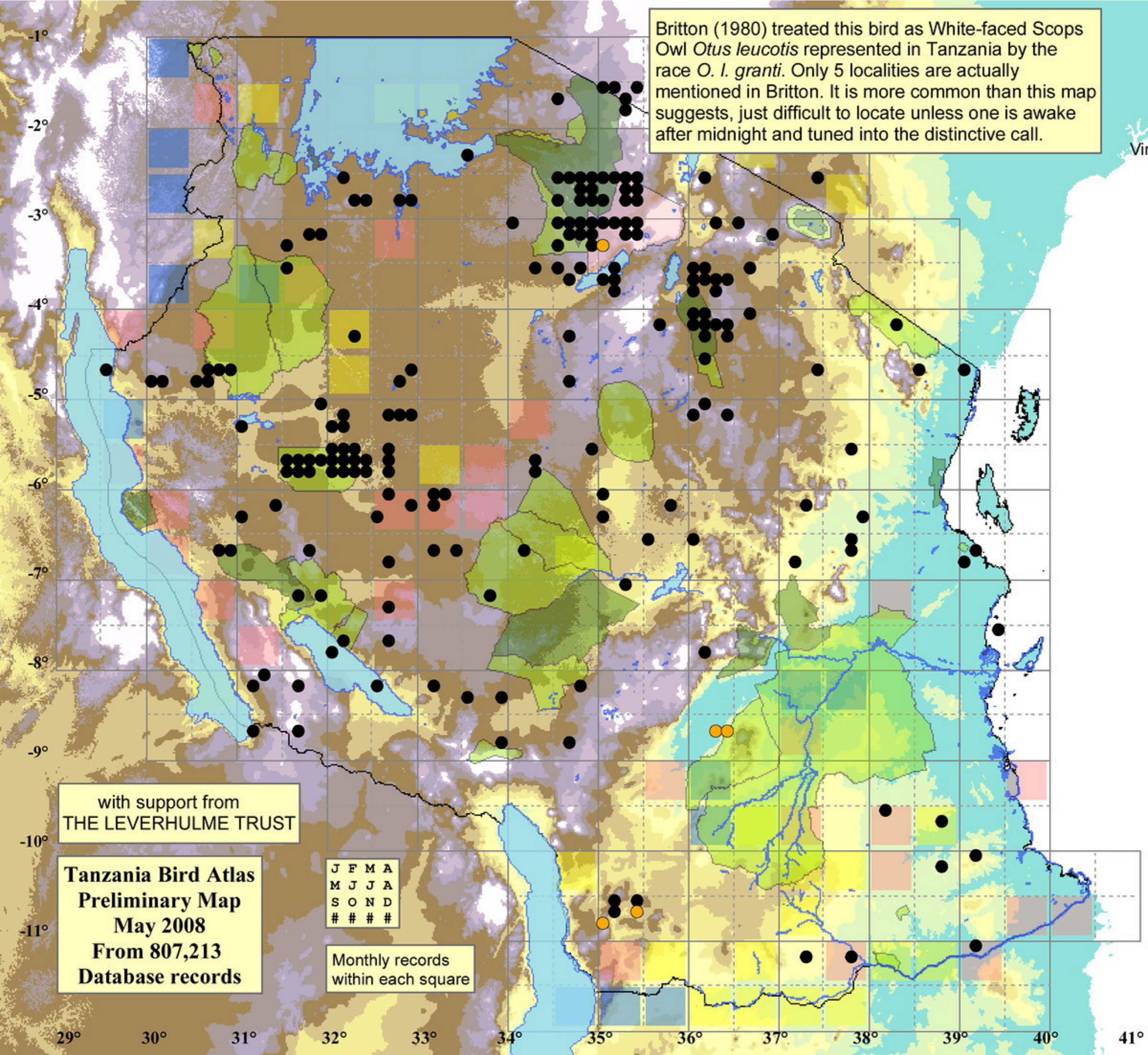
Month	presence	bs	eggs
January	23	-	-
February	42	-	-
March	20	-	-
April	15	-	-
May	14	-	-
June	39	-	-
July	35	1	-
August	28	2	-
September	26	2	-
October	18	-	-
November	19	-	-
December	12	-	-

### Status

- Presence
- Breeding season
- Month with eggs

### Elevation (m)

- 1 - 300
- 300 - 500
- 500 - 700
- 700 - 900
- 900 - 1,100
- 1,100 - 1,300
- 1,300 - 1,500
- 1,500 - 1,700
- 1,700 - 1,900
- >1,900



with support from  
THE LEVERHULME TRUST

**Tanzania Bird Atlas  
Preliminary Map  
May 2008  
From 807,213  
Database records**

J	F	M	A
M	J	J	A
S	O	N	D
#	#	#	#

Monthly records  
within each square

29° 30° 31° 32° 33° 34° 35° 36° 37° 38° 39° 40° 41°