

# Spotted Eagle Owl

*Bubo africanus*

601 plots from 1182 records

- Status**
- Presence
  - Breeding season
  - Month with eggs

Virgin Yellow-vented Bulbul squares **9**

Single YvB month **16**

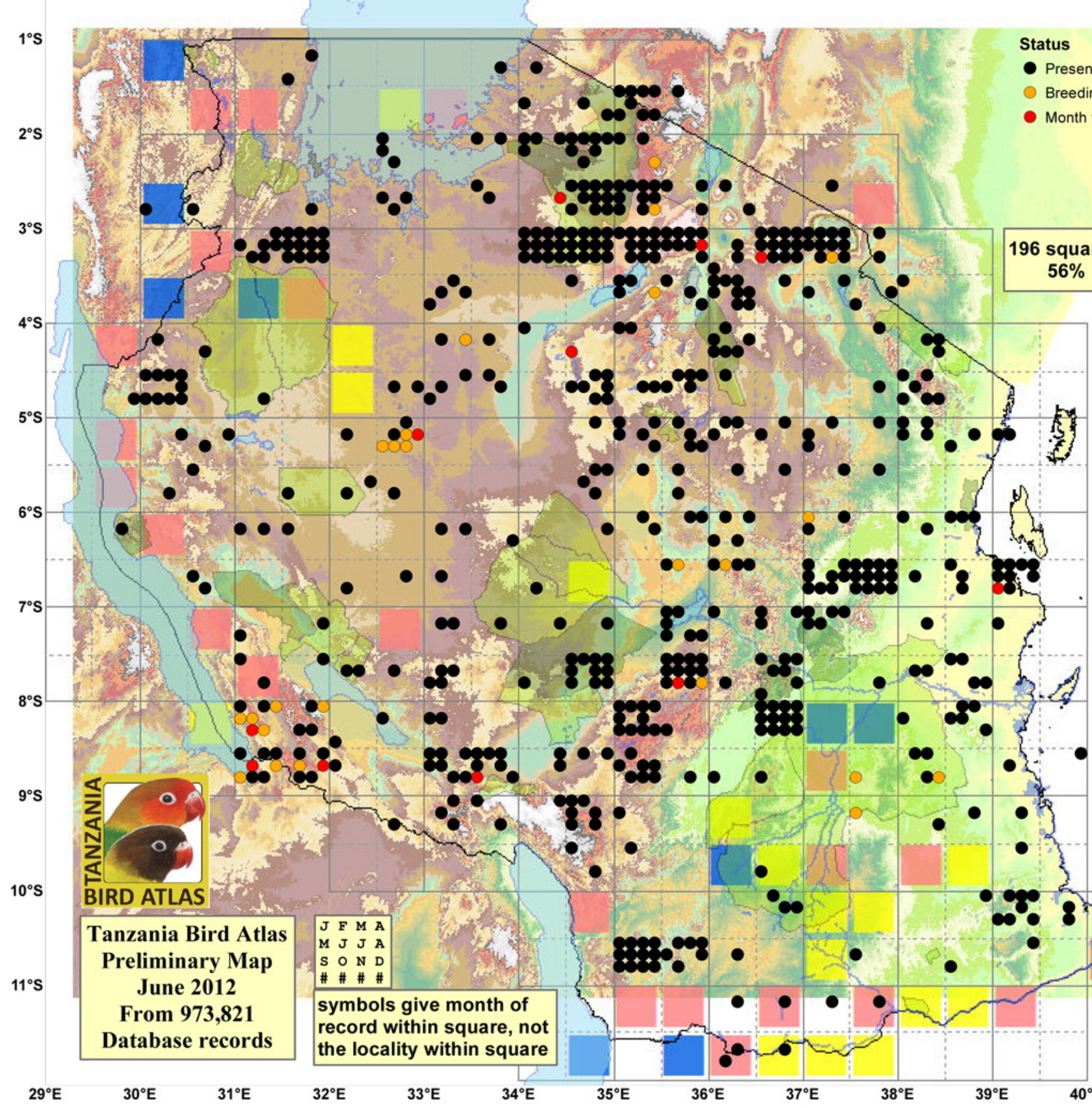
Two YvB months **24**

196 squares  
56%

**Seasonality**  
presence bs eggs

Month	presence	bs	eggs
January	107	1	-
February	98	4	-
March	105	-	-
April	87	2	-
May	112	2	-
June	99	3	1
July	109	1	-
August	82	4	4
September	67	4	5
October	79	1	2
November	95	3	-
December	96	4	-
month 13	4		

from Britton (1980).  
A wide-ranging species from sea-level to 2100 m probably mainly sedentary though wandering to some extent as evidenced by its colonization of quarries in the Mombasa area where it is not otherwise known to occur. In Kenya and Uganda it is typically an uncommon and local bird of rocky slopes, cliffs and ravines in bushland woodland or open country. In much of Tanzania it is reasonably common and widespread in miombo and other woodlands, being the most frequently recorded owl in Biharamulo, Kibondo Tabora, Iringa and Songea. Three races occur *cinerascens* in N Kenya and N Uganda south to Bunyoro, Mubende, Teso, the Kerio Valley, Isiolo and Wajir *tanae*, described by Keith and Twomey (1968), collected at Bura (Tana), Garissa, Garsen and the Lali Hills in interior E Kenya, while intergrades between *tanae* and *cinerascens* may occur between Garissa and Isiolo; nominate elsewhere in East Africa, north along the coast to Lamu.



Tanzania Bird Atlas  
Preliminary Map  
June 2012  
From 973,821  
Database records

J	F	M	A
M	J	J	A
S	O	N	D
#	#	#	#

symbols give month of record within square, not the locality within square