

Pale Chanting Goshawk

Melierax poliopterus

666 plots from 3,076 records

Virgin Yellow-vented Bulbul squares **9**

Single YvB month **20**

Two YvB months **21**

Seasonality

	presence	bs	eggs
January	311	2	-
February	282	4	-
March	261	1	2
April	224	3	1
May	201	-	-
June	268	-	-
July	327	4	-
August	254	-	-
September	226	1	1
October	212	3	1
November	193	1	1
December	289	2	-
month 13	1		

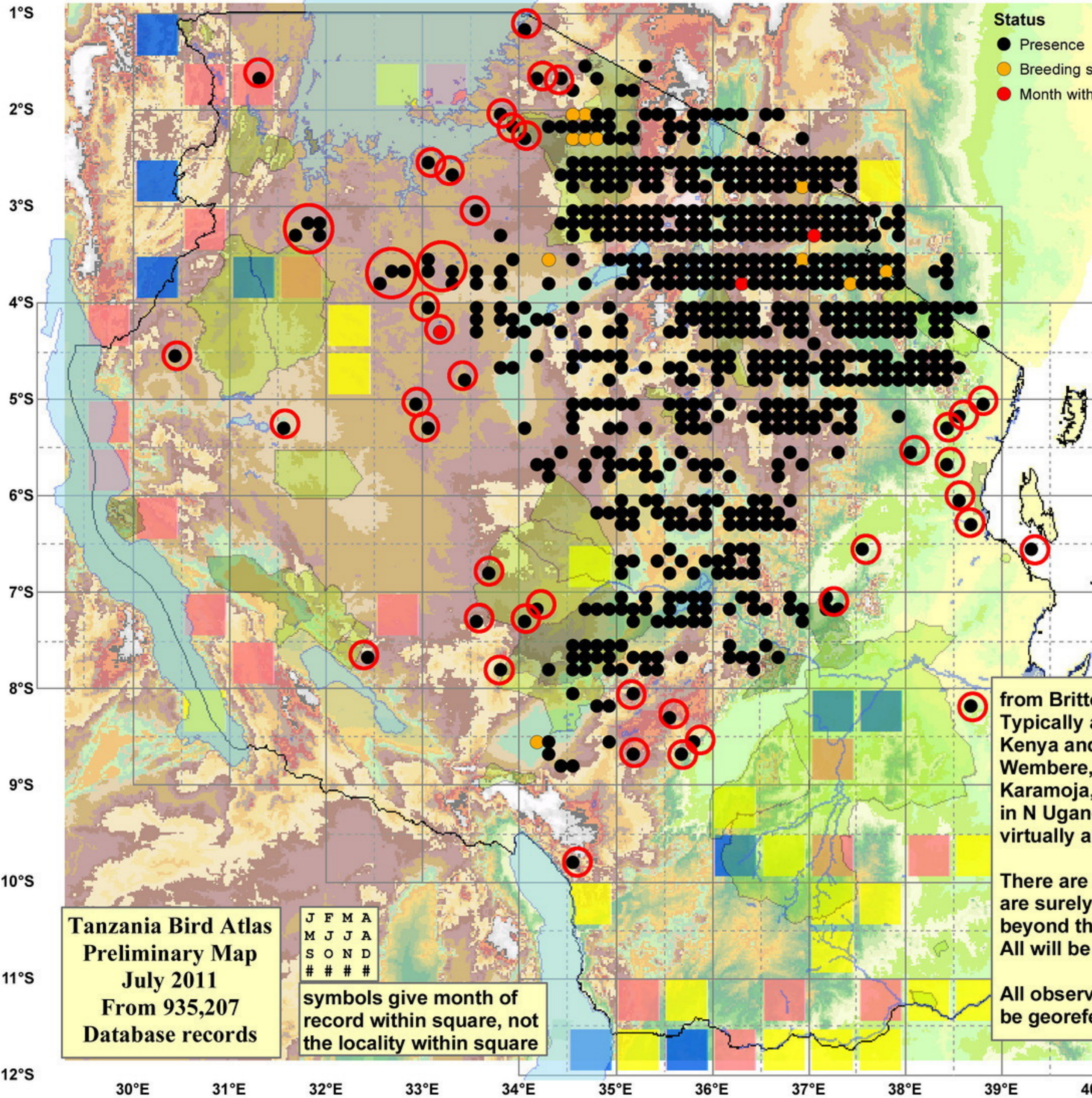
from Britton (1980). Typically a bird of arid and semi-arid plateau country in E Kenya and NE Tanzania, south to Iringa and west to Wembere, Loita, Elmenteita and Turkana, extending to Karamoja, Teso (south to Inyeno) and Kabalega Falls NP in N Uganda. This and Dark Chanting Goshawk are virtually allopatric members of a superspecies.

There are a number of records mapped (red circles) that are surely ID errors for DCG but some records just beyond the core range may be genuine wanderers. All will be cross checked.

All observations on the edge of the core range should be georeferenced and day dated.

Status

- Presence
- Breeding season
- Month with eggs



Tanzania Bird Atlas
Preliminary Map
 July 2011
 From 935,207
 Database records

J	F	M	A
M	J	J	A
S	O	N	D
#	#	#	#

symbols give month of record within square, not the locality within square