

# Zebra Waxbill

*Amandava subflava*

298 plots from 521 records

Virgin Yellow-vented Bulbul squares **9**

Single YvB month **16**

Two YvB months **24**

Occurs in  
106 squares  
30%

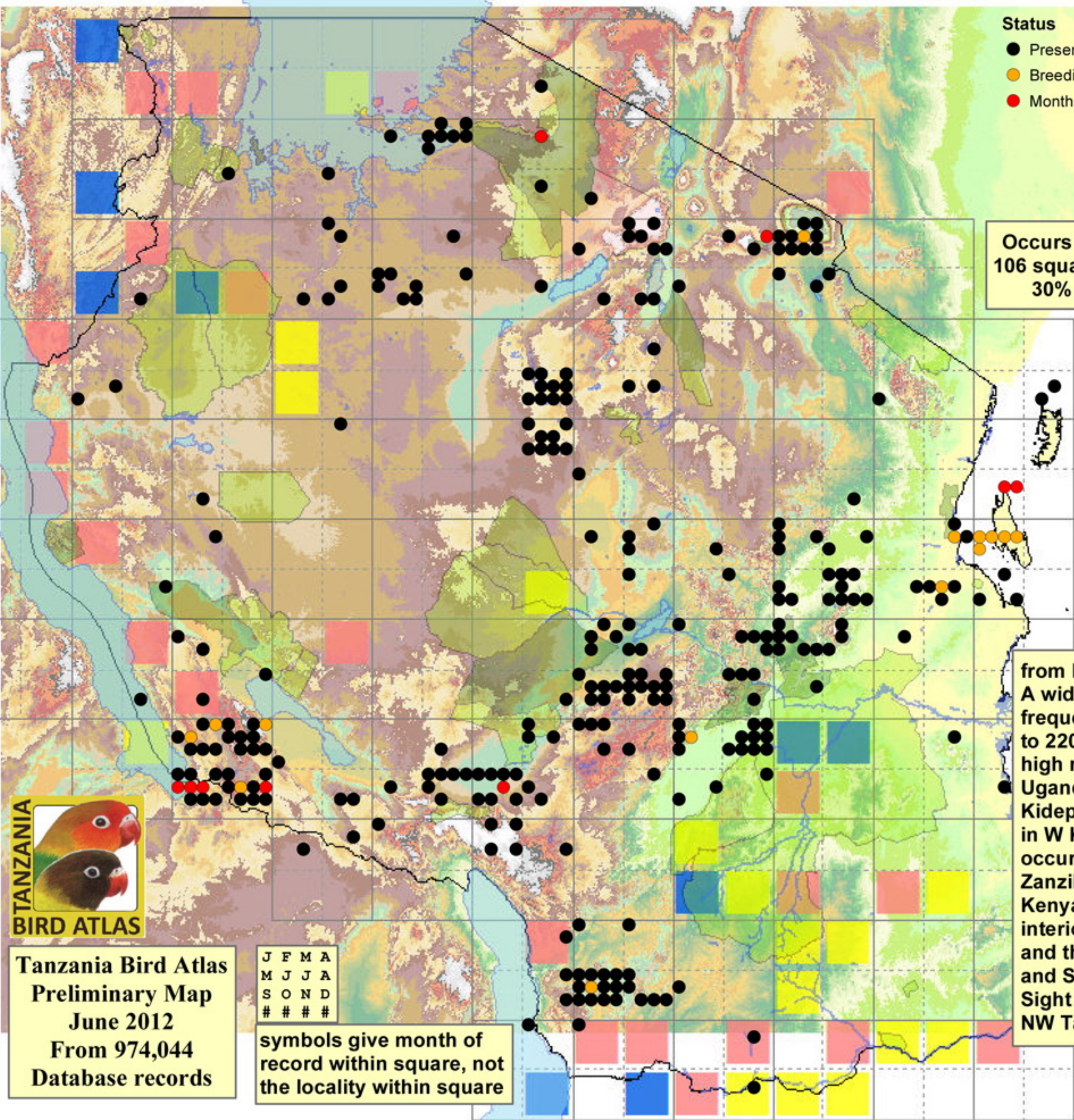
Seasonality  
presence bs eggs

Month	presence	bs	eggs
January	56	-	-
February	34	-	-
March	31	-	-
April	28	2	-
May	43	1	1
June	47	8	3
July	32	3	2
August	31	1	3
September	32	1	-
October	52	-	-
November	51	-	-
December	57	-	-
month 13	1	-	-

from Britton (198).

A widespread but seldom common resident and wanderer frequenting long grass, swamp edges and cultivation up to 2200 m, seldom far from permanent water and usually in high rainfall areas. The nominate race ranges widely in Uganda north to Masindi, Kabalega Falls NP, Teso and Kidepo Valley NP, and in Siaya, Kisumu and Uasin Gishu in W Kenya. The race *clarkei* is inexplicably local, occurring in the coastal lowlands at Mikindani, Soga, Zanzibar, Pemba, Mafia and Witu; the E edge of the Kenya highlands from Ngong and Nairobi to Mt Kenya; interior E Tanzania from Arusha NP, the Crater Highlands and the foothills of the Ulugurus to Njombe and Songea; and SW Tanzania from the Ufipa Plateau to Mpanda. Sight records from West Lake, Kibondo and N Tabora in NW Tanzania cannot be assigned racially.

- Status
- Presence
  - Breeding season
  - Month with eggs



Tanzania Bird Atlas  
Preliminary Map  
June 2012  
From 974,044  
Database records

J	F	M	A
M	J	J	A
S	O	N	D
#	#	#	#

symbols give month of  
record within square, not  
the locality within square

1°S  
2°S  
3°S  
4°S  
5°S  
6°S  
7°S  
8°S  
9°S  
10°S  
11°S

29°E 30°E 31°E 32°E 33°E 34°E 35°E 36°E 37°E 38°E 39°E 40°E 41°E