

# Zebra Waxbill

*Amandava subflava*

268 plots from 463 records

Clearly a dry season breeder with rather extensive post breeding movements. Note that only in a single square is it recorded for all months. All those Zanzibar records are from the literature.

- Virgin Yellow-vented Bulbul squares **12**
- Single YvB month **25**
- Two YvB months **26**

**Seasonality**

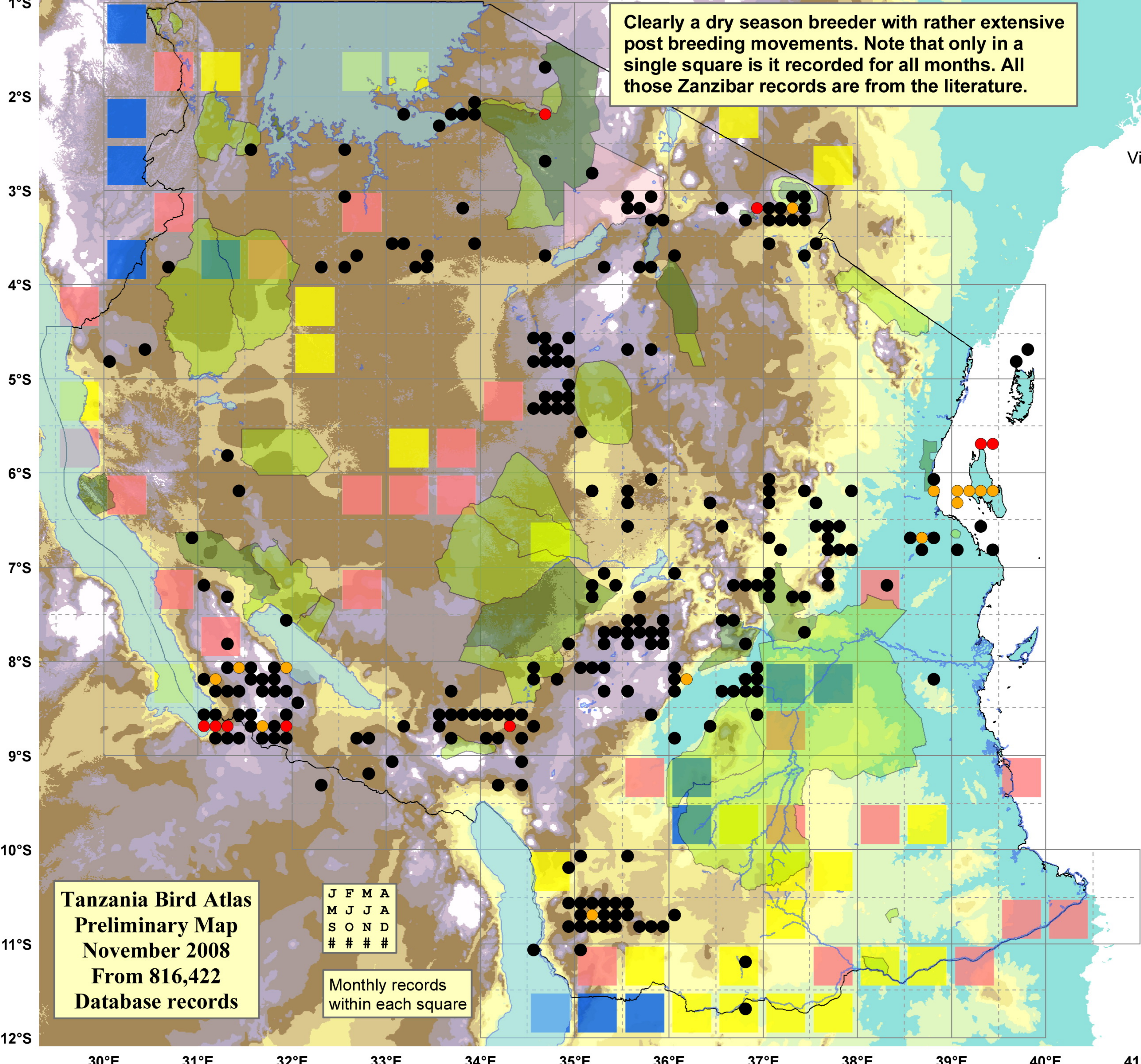
	presence	bs	eggs
January	50	-	-
February	27	-	-
March	29	-	-
April	27	2	-
May	41	1	1
June	38	8	3
July	30	3	3
August	29	1	3
September	23	1	-
October	46	-	-
November	44	-	-
December	52	-	-
month 13	1	-	-

- Species STATUS**
- Presence
  - Suspected breeding
  - Confirmed breeding

**Elevation (m)**

**VALUE**

- 1 - 300
- 300 - 500
- 500 - 700
- 700 - 900
- 900 - 1,100
- 1,100 - 1,300
- 1,300 - 1,500
- 1,500 - 1,700
- 1,700 - 1,900
- >1,900



**Tanzania Bird Atlas**  
**Preliminary Map**  
**November 2008**  
**From 816,422**  
**Database records**

J	F	M	A
M	J	J	A
S	O	N	D
#	#	#	#

Monthly records within each square