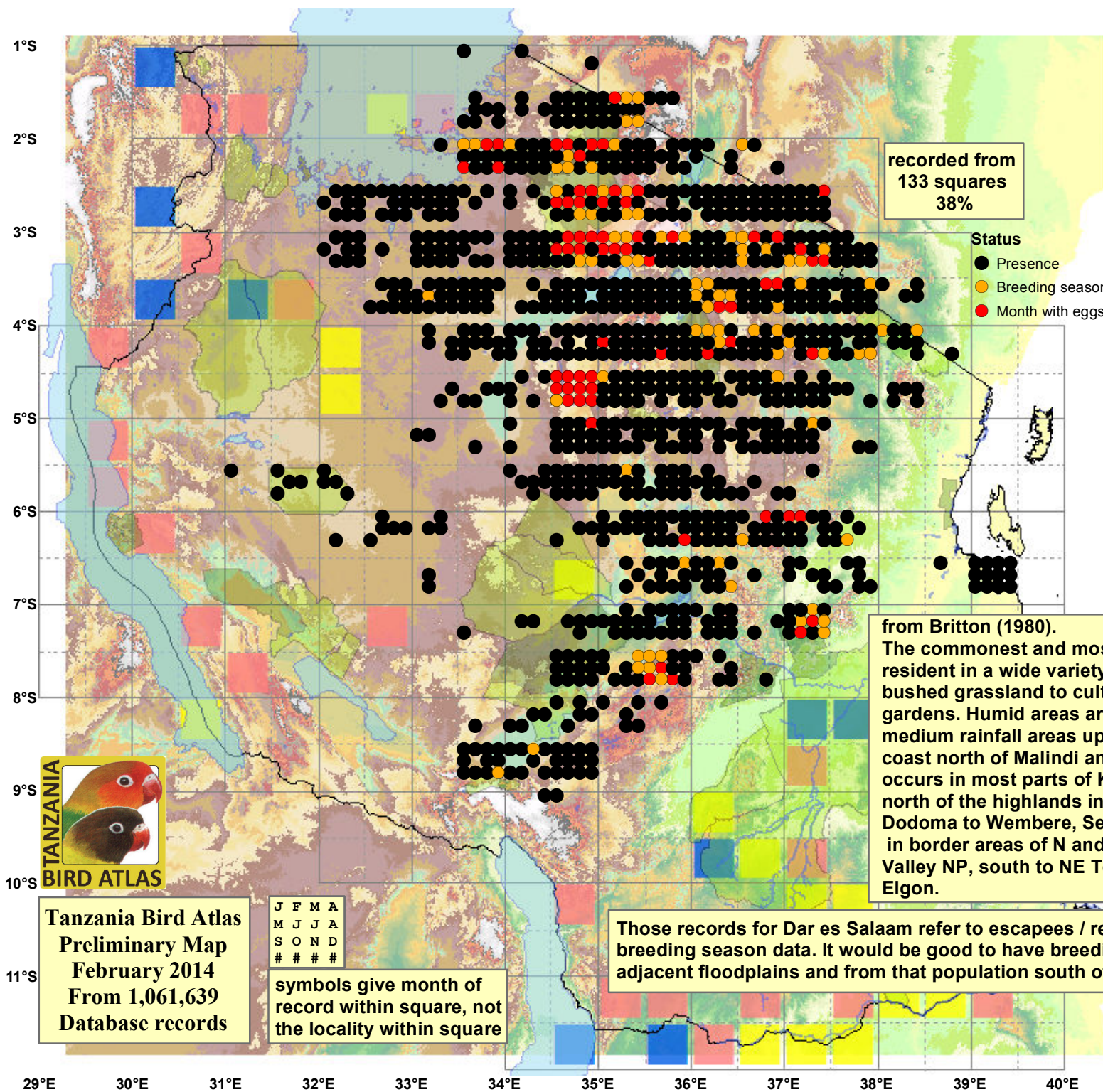


Superb Starling

Lamprotornis superbus

1,028 plots from 7,873 records



Virgin Yellow-vented Bulbul squares **9**

Single YvB month **16**

Two YvB months **24**

Status
 ● Presence
 ● Breeding season
 ● Month with eggs

	Seasonality		
	presence	bs	eggs
January	797	27	16
February	807	28	23
March	534	21	16
April	438	23	16
May	750	16	18
June	791	14	9
July	719	7	7
August	628	9	2
September	378	8	3
October	597	14	7
November	436	10	11
December	644	34	15

from Britton (1980).
 The commonest and most widespread member of the genus, resident in a wide variety of open habitats from arid and semi-arid bushed grassland to cultivation, lakeshore woodland and suburban gardens. Humid areas are avoided, but it ranges widely in low and medium rainfall areas up to 2200m (sometimes 3000m), reaching the coast north of Malindi and the Lake Victoria basin in Kisumu. It occurs in most parts of Kenya, in the dry plateau of E Tanzania from north of the highlands in Mbeya and Iringa through Singida and Dodoma to Wembere, Serengeti NP, Arusha and Mkomazi GR, and in border areas of N and E Uganda, from West Nile to Kidepo Valley NP, south to NE Teso, Debasien GR and the slopes of Mt Elgon.

Those records for Dar es Salaam refer to escapees / releases from the bird trade. Note the lack of breeding season data. It would be good to have breeding season data from Ugalla GR and the adjacent floodplains and from that population south of Lake Victoria.



Tanzania Bird Atlas
 Preliminary Map
 February 2014
 From 1,061,639
 Database records

J F M A
 M J J A
 S O N D
 # # # #
 symbols give month of record within square, not the locality within square